

Testing the sensitivity of Tract-Based Spatial Statistics to simulated treatment effects in preterm neonates

Gareth Ball¹, Serena J Counsell¹, Tomoki Arichi^{1,2}, Nazakat Merchant^{1,2}, Daniel Rueckert³, A David Edwards^{1,2}, and James P Boardman^{1,4}

¹Centre for the Developing Brain, Imaging Sciences Department, MRC Clinical Sciences Centre, Hammersmith Hospital, Imperial College London, London, United Kingdom, ²Division of Neonatology, Imperial College London Healthcare NHS Trust, London, United Kingdom, ³Biomedical Image Analysis Group, Department of Computing, Imperial College London, London, United Kingdom, ⁴Simpson Centre for Reproductive Health, Royal Infirmary of Edinburgh, Edinburgh, United Kingdom

Background

Preterm infants carry a profound risk of developing a spectrum of major disabilities and deficits in cognition, coordination and behaviour¹ and microstructural alterations in the developing preterm white matter may underlie some of these deficits². Neuroprotective strategies for the preterm infant have been proposed, however it is difficult to evaluate the potential of therapeutic intervention during early development without appropriate biomarkers. Tract-based spatial statistics (TBSS; www.fmrib.ox.ac.uk/fsl/)³ has been shown to provide a powerful biomarker for neonatal neuroprotection in small groups of patients with severe brain injury⁴ and therefore may represent an ideal method for assessing the efficacy of future therapeutic strategies in preterm infants. Here, we simulate global treatment effects, represented by increased FA, across different group sizes to test the sensitivity of TBSS to FA differences in neonates. As proof of concept we compare these simulations to a real 'effect' of increasing age at scan.

Methods

Fractional anisotropy (FA) maps constructed from 3-Tesla, 15 direction DTI acquired from 90 preterm infants at term-equivalent age were used for the study. Datasets were randomly split into 'treated' and 'untreated' groups of increasing size (from 5 to 45 per group) and each FA map was co-registered to a common template using a TBSS pipeline optimized for neonates⁵. For each group size, all 'treated' infants' FA map values were artificially increased voxelwise by between 1 and 20% to simulate a global treatment effect before transformation to the common space. FSL's Randomise (v2.5; www.fmrib.ox.ac.uk/fsl/) was used to perform statistical comparison of 'treated' and 'untreated' FA maps and the number of voxels where a significant difference ($p < 0.05$ corrected) could be detected was calculated as a percentage of the total number of voxels in the TBSS skeleton. As proof of concept the FA maps were split into two groups of 45 according to each infant's postmenstrual age at scan ('old' infants scanned after 41⁺³ weeks and 'young' infants scanned before 41⁺³ weeks). The % of voxels where a significant difference could be detected between the two groups was compared to that predicted by the simulated data.

Results

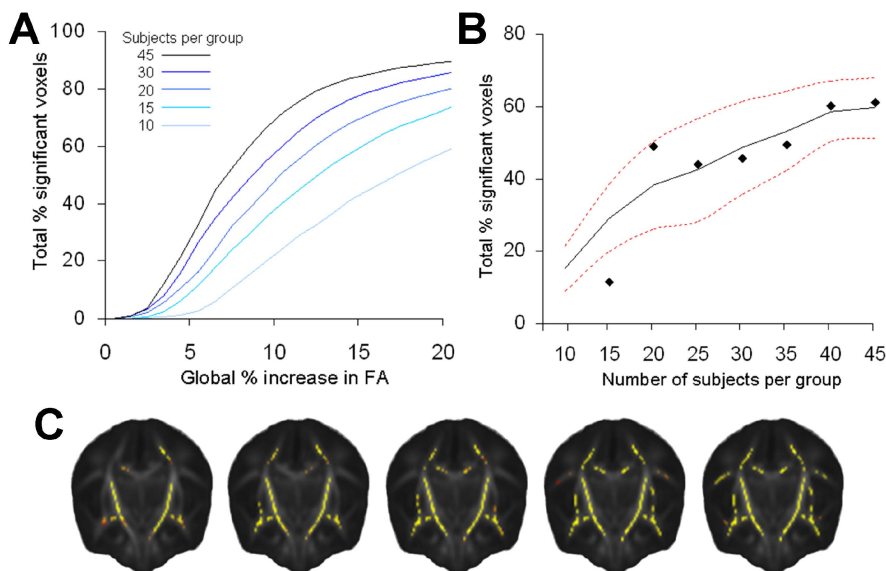


Figure 1: Simulating treatment effects using TBSS

Conclusion

TBSS can readily be used in neonates to detect global differences in FA even in relatively small group sizes. These preliminary data indicate that using TBSS as a biomarker may allow trials of potential neuroprotective strategies to measure outcome earlier in development and with fewer subjects.

References

1. Marlow et al. *N Engl. J Med.* **352**, 9-19 (2005).
2. Krishnan et al. *Pediatrics* **120**, 604-609 (2007)
3. Smith et al. *Neuroimage* **31**, 1487-1505 (2006).
4. Porter et al. *Pediatr. Res.* **68**, 205-209 (2010).
5. Ball et al. *Neuroimage* **53**, 94-102 (2010).