

CEST MRI for monitoring bacteriolytic tumor therapy

G. Liu^{1,2}, C. Bettgowda³, A. A. Gilad^{2,4}, M. T. McMahon^{1,2}, K. W. Chan^{2,4}, K. W. Kinzler³, B. Vogelstein³, J. W. Bulte^{2,4}, S. Zhou³, and P. C. van Zijl^{1,2}
¹F.M. Kirby center, Kennedy Krieger Institute, Baltimore, MD, United States, ²Department of Radiology, Johns Hopkins University School of Medicine, Baltimore, MD, United States, ³Ludwig Center, Howard Hughes Medical Institute and Sidney Kimmel Cancer Center, Johns Hopkins University School of Medicine, Baltimore, MD, United States, ⁴Institute for Cell Engineering, Johns Hopkins University School of Medicine, Baltimore, MD, United States

INTRODUCTION

Anaerobic bacteria have been known for more than 50 years for their ability to exclusively proliferate in hypoxic solid malignancies, resulting in tumor destruction. This approach, named bacteriolytic therapy, has found renewed interest through the availability of genetic engineering of various bacteria.¹ For example, *Clostridium novyi-NT*, the bacterium explored here is currently being tested in a FDA approved phase I clinical trials of colorectal cancer. In experimental models, after a single intravenous administration of *C. novyi-NT* spores, the bacterium generates a robust and predictable response consisting of germination and proliferation within the tumor in 12-24 hours, followed by an immune responses to eradicate tumor cells in the well oxygenated regions.² A non-invasive imaging approach that could monitor this treatment response would be of immense value for translating bacteriolytic therapy into the clinic. We hypothesized that bacteria should be detectable through their high protein content using Chemical Exchange Saturation Transfer (CEST) MRI,^{3,4} which has been used to detect intracellular mobile proteins using the so-called amide proton transfer (APT) signals at 3.5 ppm from water protons.⁵ These signals are higher in tumor cells, which have been extensively studied for their CEST signal.⁸ To test whether we can detect bacteria through their proteins, we investigated the CEST properties of *C. novyi-NT* *in vitro*, followed by *in vivo* exam of whether tumor infection could be measured by CEST MRI.

METHODS AND MATERIALS

The bacterium of *C. novyi-NT* (*C. novyi* genetically engineered to remove the major systemic toxin gene) was anaerobically cultured¹. For the *in vitro* study, bacteria were re-suspended in 10 mM PBS containing 2% oxyrase for an anaerobic environment. The concentration of bacteria was estimated by their O.D. 600 nm and then adjusted to three different concentrations (3x10⁷, 6x10⁶ and 3x10⁵ cells/ml). Samples of 2% oxyrase in PBS and spore solution (4x10⁷ spores/ml) were also prepared as controls. *In vitro* CEST MRI was conducted as described⁶ on a 9.4T Bruker imager. A modified RARE (TR=6.0 sec, effective TE = 43.2ms, RARE factor =16, slice thickness=0.7mm, matrix size=128x64, resolution= 0.10x0.15mm², and NA=2) including a magnetization transfer (MT) module (3sec continuous pulse, B1= 3.6 μT) was used to acquire CEST weighted images with saturation swept from -5ppm to 5ppm (step=0.4 ppm) with respect to water resonance (0ppm). The B₀ inhomogeneity was corrected using the WASSR method^{6,7}. CEST was quantified using MTR_{asym} as defined by (S^{Δω} - S^{+Δω})/S₀. Colorectal HCT116 cells (5x10⁶) were injected subcutaneously into the flank of athymic nude mouse to form tumors. Xenografts were allowed to grow for ~14 days to reach critical size (> 350 mm³) with highly hypoxic cores. First, an MRI acquisition was conducted before injection to assess the background CEST signal. Subsequently, each animal received tail vein injection of spore solution (3x10⁸ spores in 200μl PBS). A second CEST MRI was conducted ~ 24h hours after injection to allow bacterial germination and the occurrence of an immune response. *In vivo*, the same CEST acquisitions were used as *in vitro*, except for TR=5 sec and RARE factor =8.

RESULTS AND DISCUSSION

In vitro results (Fig. 1) clearly showed pronounced CEST MTR_{asym} signal at 2.6ppm and 1ppm after the background subtraction of CEST signal of medium. A good linear correlation between apparent MTR_{asym} and concentration was found (Fig. 1b), indicating that the CEST signal at 2.6ppm can potentially be used to quantify bacterial infection. The *in vitro* results show 5% CEST contrast for a density of 100 cells/voxel (0.0145 mm³/ voxel), implying the CEST method is feasible for *in vivo* studies.

We then injected *C. novyi-NT* spores intravenously into tumor bearing mice and observed the change in CEST signal before and 24 hours after injection, by which time the bacteria had germinated in the hypoxic regions of the tumor and the immune responses had already been triggered as evidenced by gram staining (Fig. 2d). As shown in Fig.2, the CEST signal at 2.6 ppm was dramatically elevated inside the tumor, indicating bacterial germination in these areas. The CEST signal in the tumor was very heterogeneous and we therefore used histogram analysis of the entire tumor to analyze it. When fitting the histogram of the CEST signal to a Gaussian distribution the contrast at 2.6 ppm (bacterial infection) was found increased from 2.0 ± 2.0% to 5.3± 3.3%. Based on the *in vitro* calibration, we estimated an average cell density of approximately 3.5 million cells /ml in the tumor or approximately 1.2x10⁵ bacteria in the 1mm thick image plane.

CONCLUSION

We used the endogenous CEST signal of bacteria at 2.6 ppm to detect infection of colorectal tumor xenografts with the therapeutic bacterium *C. novyi-NT*, showing potential for non-invasive monitoring of bacteriolytic treatment *in vivo* without the need for contrast agents.

REFERENCE

(1)Dang, L., et al. PNAS 2001, 98, 15155. (2) Agrawal, N., et al. PNAS 2004, 101, 15172. (3)Liu, G., et al. Contrast Media Mol Imaging 2010, 5, 162-70. (4)Kim, M., et al. Magnetic Resonance in Medicine 2009, 61, 1441-1450. (5)Goffeney, N., et al. J Am Chem Soc 2001, 123, 8628-9. (6)Ward, K. M., et al. J Magn Reson 2000, 143, 79-87. (7) Zhou, J., et al. Nat. Med. 9, 1085 (2003). (8) Zhou, J., et al. Magn. Reson. Med. 2003, 50, 1120-1126. Supported by NIH grants EB008769, NS065284, EB005252 and EB006394.

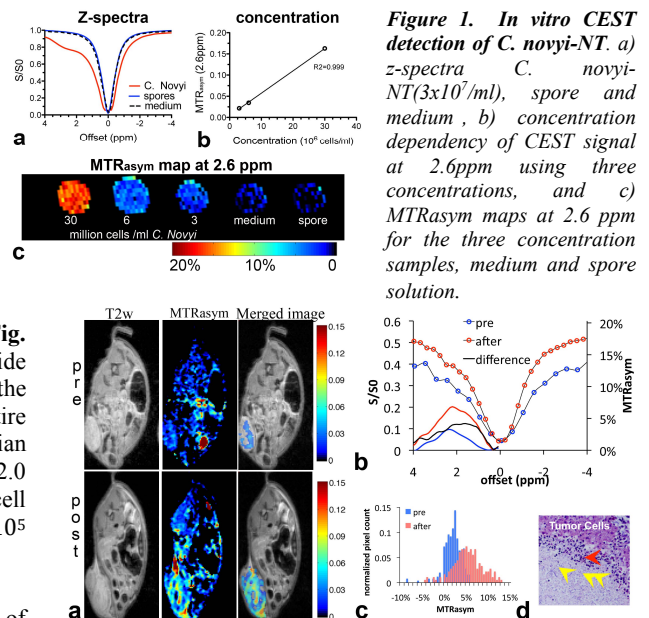


Figure 1. *In vitro* CEST detection of *C. novyi-NT*. a) z-spectra *C. novyi-NT*(3x10⁷/ml), spore and medium, b) concentration dependency of CEST signal at 2.6ppm using three concentrations, and c) MTR_{asym} maps at 2.6 ppm for the three concentration samples, medium and spore solution.

Figure 2. Detection of *C. novyi-NT* infection in xenografted colorectal tumors. a) T2-weighted (T2w) images, MTR_{asym} maps at 2.6 ppm, with merged images showing the co-localization of CEST signal on T2w image before and 24 hours after injection of *C. novyi-NT*. b) Comparison of CEST signals in the tumor ROI before and 24 hours after injection, including z-spectra (left y-axis) and MTR_{asym} plots (right y-axis). c) Histogram analysis of CEST signal of tumor ROI before (blue) and 24 hours after (red), d) Gram stain of the tumor region showing *C. novyi-NT* (yellow arrows) and inflammatory cells (red arrow).