

### **Rare Involvement in Behcet Disease: Myositis**

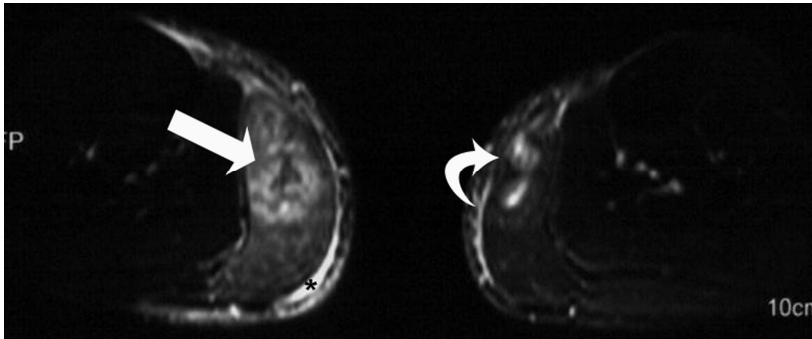
S. YILMAZ<sup>1</sup>, M. CINAR<sup>1</sup>, H. T. SANAL<sup>2</sup>, O. KARADAG<sup>1</sup>, Y. KARSLIOGLU<sup>3</sup>, I. SIMSEK<sup>1</sup>, H. ERDEM<sup>1</sup>, S. PAY<sup>1</sup>, and A. DINC<sup>1</sup>

<sup>1</sup>Division of Rheumatology, Gulhane School of Medicine, Kecioren, Ankara, Turkey, <sup>2</sup>Department of Radiology, Gulhane School of Medicine, Kecioren, Ankara, Turkey, <sup>3</sup>Department of Pathology, Gulhane School of Medicine, Kecioren, Ankara, Turkey

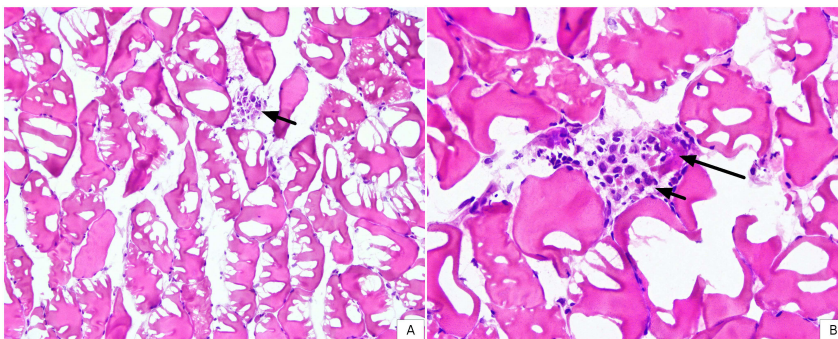
**Purpose:** Behçet disease (BD) is a chronic, relapsing vasculitis and classically characterized by recurrent mucocutaneous aphthous ulcers. Other systems like ocular, articular, vascular, gastrointestinal, and central nervous may also be involved by the disease process. There is little known about myositis associated with BD which to date, this complication has been reported in 12 cases in the English literature, in which those were pediatric patients (1). Here in this study, we aim to display the MRI findings of BD affecting the crural muscles of two adults.

**Outline of Content;** Two male cases of ages 38 and 24-years with BD will be presented with their clinics, MRI and the pathology findings of their diseased muscles.

**Summary** At the end of this exhibition, the viewer will learn the MRI appearances of muscles affected in BD, and their differentials such as myonecrosis of diabetes, soft tissue abscess, haematoma and some muscle tumors.



24-year-old man with Behcet disease. Axial fat-saturated T2-weighted image shows focal myonecrosis in the gastrocnemius muscle of the right side (straight arrow). On the left side, a focal mass-like bright lesion (curved arrow) is seen. Note the facial involvement with the inflammatory



**A)** A small cluster of macrophages (arrow) scavenging debris from a necrotic myocyte (X200, H&E). **B)** Another focus in higher magnification shows both the macrophages (short arrow), and a myofiber which is necrotic and partially removed (long arrow) (X400, H&E).

### **References**

- (1) Ogoş T, et al. *Pediatr Int.* 2010;52: 101-104.